

LITHUANIAN CUP 2022

ORIENTEERING EVENT

22–23 October 2022

Bulletin No. 1 (2022 03 27)

Orienteering club „Sakas“ together with Lithuanian Orienteering Federation invite all orienteering enthusiasts to the orienteering competition "Lithuanian Cup 2022" held in Vainagai, Kelmė district.

ORGANIZERS

Lithuanian Orienteering Federation

Orienteering club „Sakas“

Event Director: Donatas Mickus

Head judge: Daugirdas Stonys

Course setter: Marius Mažulis

MTBO course Setter: Ignas Ambrazas

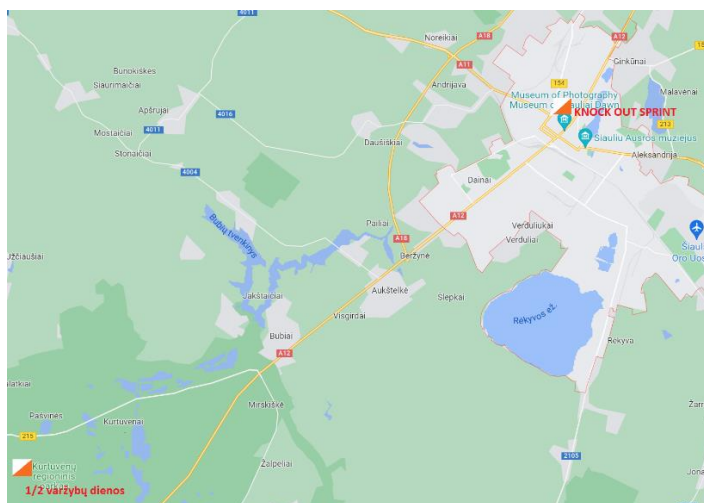
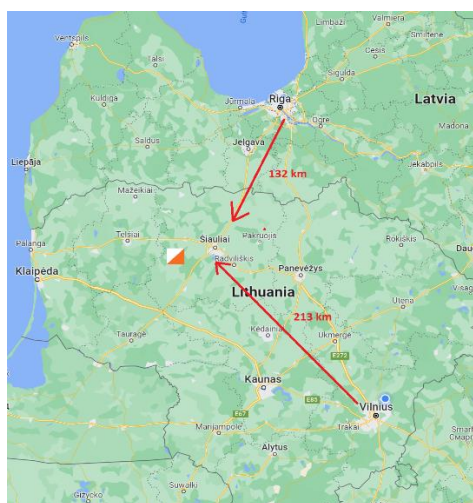
Event Secretary: Vytautas Ralys

Event Adviser: Arūnas Saunorius

Cartographer: Egidijus Kukenys

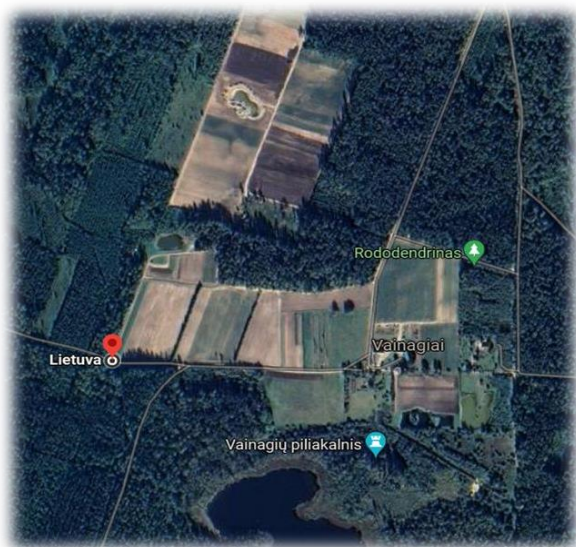
Supervisors: Sandra Paužaitė, Ričardas Tėvelis, Remigijus Masilionis

DATE AND VENUE



Event date: 22-23.10.2022

Venue: Vainagių forest, Kelmės district. Access to event place [here](#).



EVENT PROGRAM

21st October

18:00–21:00 Numbers can be taken in the store [S-Sportas](#).

22nd October

9:00–11:30 Arrival and registration in the event center

11:00 MTBO start

12:00 Runners middle distance start

17:00–18:00 *Knock-out (super elite)* sprint according to separate invitations by organizers

23rd October

10:00 MTBO start

11:00 Runners prolonged middle distance start

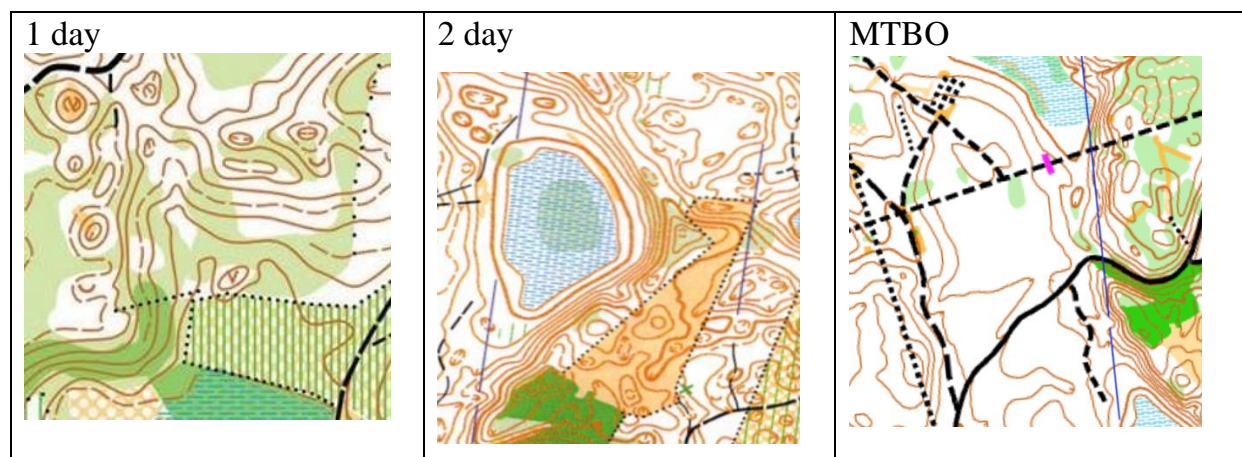
12:30 MTBO prize-giving ceremony

14:30 Closing and runners prize-giving ceremony

TERRAINS AND MAPS

1 day: Network of firebreaks and paths are medium density with average runnability. The average relief forms dominate. Map is created in 2022. Map scale 1:10000, H 2.5 m. Mastelis 1:10000, horizontalis 2.5 m. For group till 14 and over 55 1:7500

2 day: Network of paths are medium density, runnability varies from average to very good. Relief forms vary from small to average. Map is created in 2022. Map scale 1:10000, H 2.5 m. For group till 14 and over 55 1:7500



COMPETITION FORMAT

Sum-up 2 days personal competition in the middle distance and prolonged middle distance held by Lithuanian Orienteering Federation regulations. Competition is held for both runners and MTBO.

COURSES

Class	1 day	2 day
DM, DV17	4.9 km 22 CP	9.3 km 24 CP
DM14	3.2 km 15 CP	4.9 km 14 CP
DM17, DM40, DV50	4.6 km 21 CP	8.1 km 25 CP
DM50, DV14, DV60	4.1 km 20 CP	6.9 km 20 CP
DM60, OPEND	3.5 km 19 CP	6.0 km 20 CP
DV, DV20	6.3 km 26 CP	11.4 km 30 CP
DV40	5.6 km 21 CP	10.0 km 26 CP
M, M20, V18	5.9 km 25 CP	5.5 km 24 CP
M10, V10, V85	1.4 km 6 CP	1.6 km 6 CP
M12, V12	2.1 km 10 CP	2.1 km 8 CP
M14	2.6 km 11 CP	2.3 km 11 CP
M16, V14	3.3 km 14 CP	2.9 km 13 CP
M18, M35, M40	4.3 km 18 CP	4.0 km 18 CP
M45, M50	4.0 km 17 CP	3.7 km 16 CP
M55, M60, V65	3.6 km 14 CP	3.3 km 14 CP
M65, V70	3.0 km 13 CP	2.7 km 12 CP
M70, V75, V80	2.2 km 10 CP	1.7 km 9 CP
OPEN1	4.7 km 19 CP	4.3 km 18 CP
OPEN2	2.6 km 10 CP	2.5 km 10 CP
V, V20	7.2 km 31 CP	6.9 km 30 CP
V16, V55, V60	4.8 km 20 CP	4.6 km 20 CP
V35, V40	6.0 km 26 CP	5.8 km 26 CP
V45, V50	5.2 km 22 CP	5.0 km 22 CP

Classes description: V – men, M – women, DV – MTBO men, DM – MTBO women.

START ORDER

Every participant will start according to their start time. The entrance to the start area is 3 minutes before the start. Start intervals within the group – 2 minute.

GPS

For the strongest competitors in classes V/M 20, V/M 23 and V/M GPS devices will be handed out in the start area. The list of the competitors who will be required to carry GPS devices will be published 1 day before competition.

RESULTS

The winners are determined and awarded according to the sum of both days in every class. Participants of classes M/V 20, M/V 23 and M/V compete in the same course, however, the results are calculated in one group with the information about won place in M/V 20 and M/V 23 group. Participants of these groups can be awarded in the elite group too.

PRIZE GIVING

Awards are carried out according to Lithuanian Cup regulations. Awards are given out only personally, to the winners who participate in the prize giving ceremony.

PUNCHING SYSTEM

SPORTident AIR+ punching system will be used in the competition. Regular SPORTident cards can be used as well. Participants who do not have SIAC cards can rent them at the event center. Rent fee – 2 €/per day. In case of losing rented SIAC card, participants will be charged according to selling prices.

ENTRIES

All entries must be made through <https://dbsportas.lt/lt/varz>. The deadline for all entries is 17th October 2022 23:59. After this date entries can be done only if possible, depending on vacant start minutes, e.g. 00:00 minute, vacant maps, numbers end etc.

FEES

Registration fees shown in the table can be paid by bank transfer or at the event center.

Class	Fees until 2022-10-17 (23:59)	Fees after 2022-10-17 (23:59)
M/V 10 – M/V 20 DM/DV 14 – DM/DV 20	5 EUR / DAY	7,5 EUR / DAY
M/V – M/V 55 DM/DV – DM/DV 50	12 EUR / DAY	18 EUR / DAY
M/V 60 – M/V 85 DM/DV 60	8 EUR / DAY	12 EUR / DAY
OPEN 1, OPEN 2, OPEN D	10 EUR / DAY	10 EUR / DAY

Participants who registered, but fail to start, paid fees are not refunded.

PAYMENT DETAILS

Entry fee is paid at the time of the registration by bank transfer.

Details for bank transfer:

Recipient: Orientavimosi sporto klubas „Sakas“

Company code: 193247622

Bank: AB bankas „Swedbank“

IBAN No.: LT717300010002403602

OTHER INFORMATION

- All competitors take full responsibility for their own health and safety, team leaders or guardians are fully responsible for the children in the competition area and on the course. All participants must have valid medical certificate allowing to participate in the competition.
- Accommodation and catering expenses for participants and team leaders are covered by sending organization or by themselves.
- All claims must be submitted as soon as possible but no later than 1 hour after competitor's finish time for the organizers or supervisors.
- All competitors must wear competition number. Competitors without numbers will be disqualified.

- When registering to the competition all participants agree that their name, surname, birth year, team name and results will be announced at <http://www.dbsportas.lt> and agree on being photographed, filmed or their location can be determined in real time during competition and collected data can be used to advertise competition and orienteering sport. Participants can refer to Lithuanian Orienteering Federation regarding personal data usage according to data protection regulations.

COVID-19 INFORMATION

All participants, team leaders, guardians and spectators must follow required COVID-19 regulations and recommendations.

ACCOMMODATION

<https://www.turizmas.lt/paieska/apgyvendinimas/%C5%A0iauliai>

Šiaulių jaunųjų turistų centras – 868712245, 7€ night

CONTACTS

Daugirdas Stonys +37066250450, daugirdas.stonys@gmail.com,

Donatas Mickus +37068552966, mickus.donatas@gmail.com

SPONSORS

TRIMTEX
TRIMTEX



ŠVIETIMO,
MOKSLO IR SPORTO
MINISTERIJA



KASP

3NT

NEKILNOJAMOJO
TURTO
PASLAUGOS



PerlasGo


Baltas & Gandras
RESTORANAS ŠEIMOMS SVEČIŲ NAMAI